

THE REAL VALUE OF MODERN BRANCH WORKFORCE AND EXECUTION TOOLS

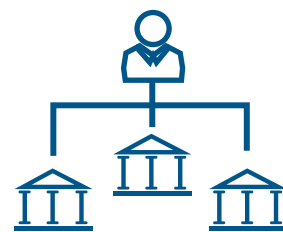
INCREASE FIELD LEADERSHIP SPANS



Consolidate work into one dashboard to ensure execution of key activities across branches

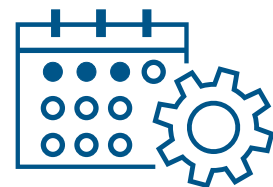


Real-time insights enable increasing District and Regional Manager reporting spans



Enable branch managers to lead more than one branch with easy follow-up and visibility to operations

REDUCE PAYROLL LEAKAGE



Maximize shift auto-scheduling and reduce hours over guidance



Optimize scheduling to balance customer demand, admin work and overtime needs

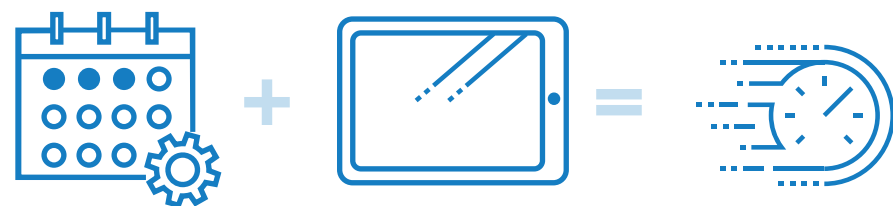
ENABLE MULTI-SITE SCHEDULING & ASSOCIATE MOBILITY



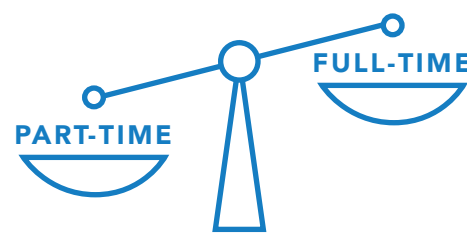
Enable above-branch scheduling with AI-powered WFM



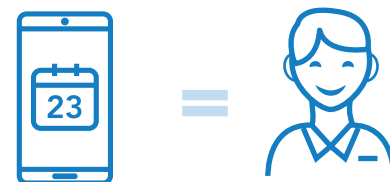
Eliminate additional FTE cushions required for PTO and sick time



Reduce manager time spent on scheduling



Enable the right mix of full-time and part-time employees with multi-site scheduling

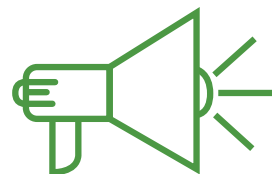


Empower employees with mobile-first tools and real-time availability & preferences

INTANGIBLE BENEFITS



Improve oversight with real-time activity management statuses



Communicate key messages or fraud alerts quickly and securely via mobile



Reduce employee attrition with real-time scheduling preferences and mobile self-service tools



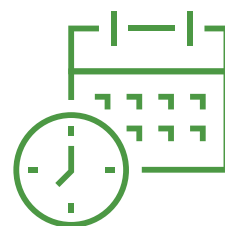
Automate scheduling and activity tracking to free up time for employee training and coaching



Improve customer experiences with more accurate forecasting and better alignment of staff



Optimize the staffing mix between roles ensuring the proper balance of staff and skillsets



Integrate client appointments to forecasting, scheduling, and lobby management for better experiences